



MetroY & MetroY Pro 3D Scanner

Wireless Blue Laser 3D Scanners

MetroY & MetroY Pro 3D Scanner

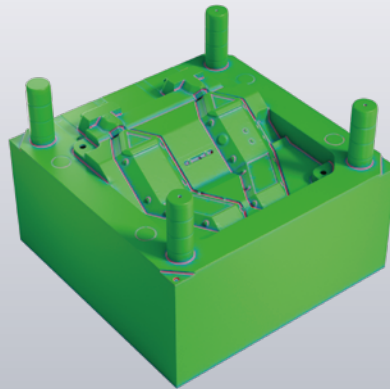
The MetroY series's industrial-grade blue-light technology offers multiple scanning modes. Combining high-accuracy scanning and wireless connectivity, it provides a professional solution for 3D data capture, measurement, and reverse engineering.

Volumetric Accuracy

0.02 mm + 0.04 mm x L (m)

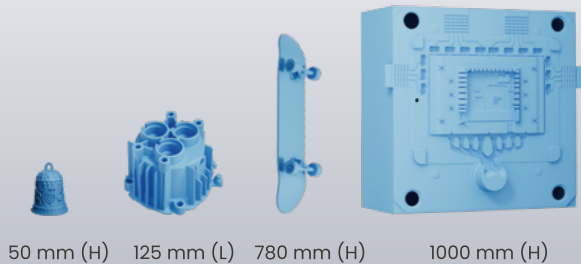
Single-frame Accuracy

up to 0.02 mm

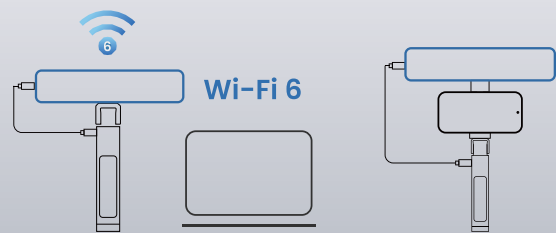


Scanning Size

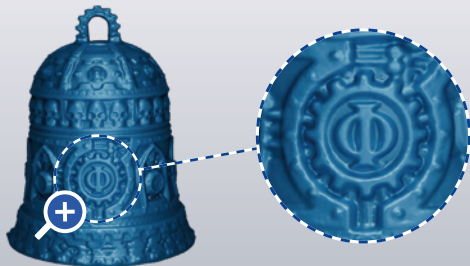
Small to Medium



Freedom to Move, Freedom to See
PC-to-Mobile Scan Streaming



Fused Point Distance Up to **0.05 mm**



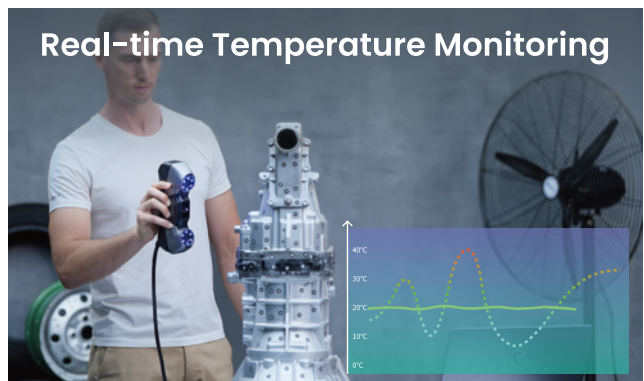
Real Color, Real Results



Up to 2,000,000 Points/s
Fast Laser Scans



Real-time Temperature Monitoring



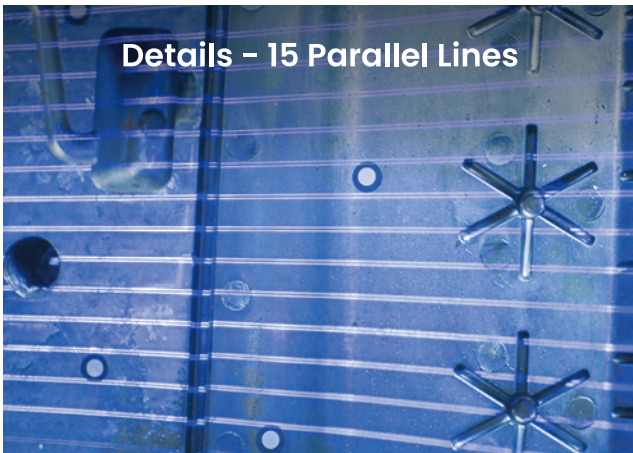
5

Blue Light Scanning Modes

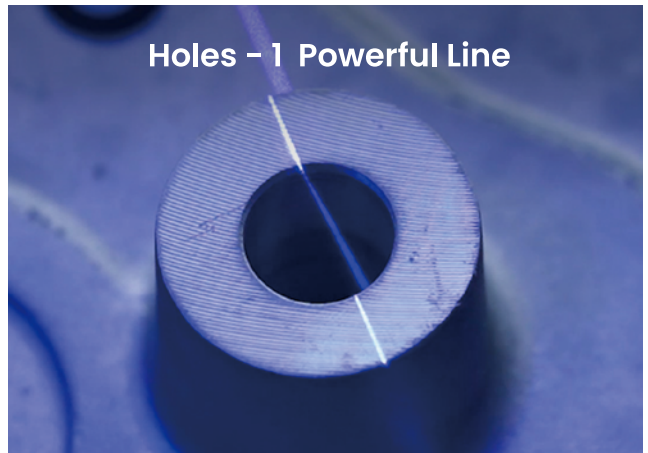
Speed - Up to 34 Cross-lines



Details - 15 Parallel Lines



Holes - 1 Powerful Line



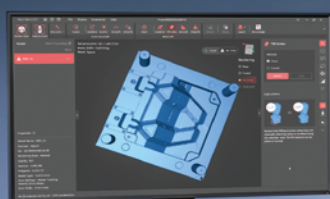
62-Line Full-field (Pro Only)



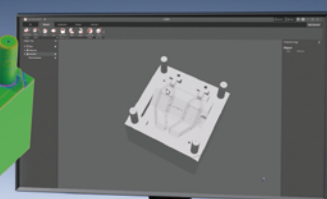
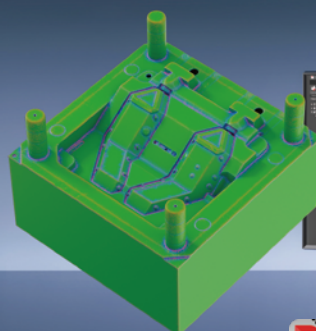
Auto Turntable (Pro Only)



From Scanning to 3D Measurement



Revo Metro
One-click Post-processing



Revo Measure
Professional 3D Measurement Software

Specifications

Product Name	MetroY	MetroY Pro
Technology	Multi-line Laser Scan	Multi-line Laser Scan and Full-field Structured Light Scan
Single-frame Precision, up to ^①	0.01 mm	0.01 mm
Single-frame Accuracy, up to ^①	0.02 mm	0.02 mm
Volumetric Accuracy	0.02 mm + 0.04 mm × L (m), L is the length of the object.	0.02 mm + 0.04 mm × L (m), L is the length of the object.
Fused Point Distance, up to	0.05 mm	0.05 mm
Working Distance	200 – 400 mm	200 – 400 mm
Single Capture Area at Nearest Distance	123 × 130 mm at 200 mm	152 × 138 mm at 200 mm
Single Capture Area at Furthest Distance	290 × 260 mm at 400 mm	332 × 276 mm at 400 mm
Minimum Scan Volume	10 × 10 × 10 mm	10 × 10 × 10 mm
Maximum Scan Volume	1 × 1 × 1 m	1 × 1 × 1 m
Scanning Speed, up to	Multi-line Laser Scan: 1,500,000 Points/s	Multi-line Laser Scan: 2,000,000 Points/s Full-field Structured Light Scan: 7,000,000 Points/s
RGB Camera Resolution	2 Megapixels	2 Megapixels
CPU	4 core ARM, 2.0 GHz	4 core ARM, 2.0 GHz
3D Light Source ^②	30 Blue Cross Laser Lines 15 Blue Parallel Laser Lines Blue Single Laser Line	34 Blue Cross Laser Lines 15 Blue Parallel Laser Lines Blue Single Laser Line 62 Line Blue Full-field Structured Light
Fill Lights ^③	12 Blue LEDs	12 Blue LEDs
Scanner Weight	447 g	450 g
Dimensions (L x W x H)	211 × 94 × 47 mm	211 × 94 × 47 mm

Notes:

① Precision and Accuracy were both acquired in a controlled lab environment. Actual results might vary, subject to the operation environment.

② Laser Safety Tips:

MetroY uses a Class 1 laser projector. Avoid looking directly at it at close range! Please refer to the Class 1 laser standard document for details.

MetroY Pro uses a Class 2M laser projector. Avoid looking directly at it at close range! Please refer to the Class 2M laser standard document for details. o avoid retina damage, don't look directly into the laser beam through optical instruments capable of magnifying it (e.g., telescopes, and camera lenses). To prevent laser reflection, avoid placing reflective surfaces like mirrors or glass in the path of the laser beam.

③ This product has flashing lights, which may not be suitable for people with photosensitive epilepsy.

 +1 (888) 807-3339

 sales@revopoint3d.com

 www.revopoint3d.com



Contact Us



Follow Us